

CONCRETE MOISTURE ENCOUNTER



The Tramex Concrete Moisture Encounter is a non-destructive meter for measuring moisture content instantly in concrete slabs per ASTM F2659, featuring Carbide Method equivalent scales for concrete and anhydrite screeds. Easy-to-use, giving precise and repeatable results, the Concrete Moisture Encounter allows the user to make multiple tests over a large area in the shortest possible time.



Product Order Code: CME5A

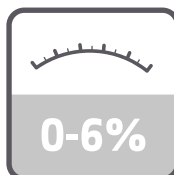
FEATURES



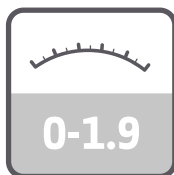
NON-Destructive



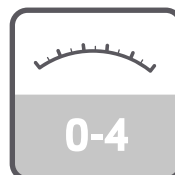
ASTM
F2659



CONCRETE %MC
READING RANGE
0-6%



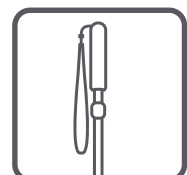
CM EQUIV ANHYDRITE
READING RANGE
0-1.9



CM EQUIV CONCRETE
READING RANGE
0-4



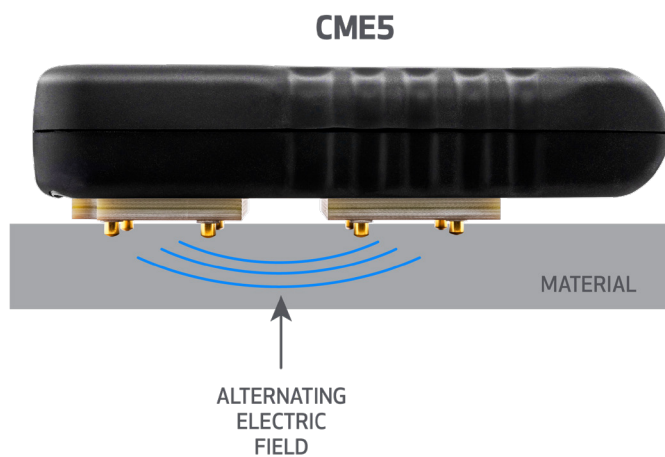
ACCOMPANYING
APP



EXTENSION HANDLE
(optional)

HOW IT WORKS

The Tramex Concrete Moisture Encounter detects and evaluates the moisture conditions within the slab or screed by non-destructively measuring the electrical impedance. A low frequency electronic signal is transmitted into the material under test via the electrodes in the base of the instrument. The strength of this signal varies in proportion to the amount of moisture present in the material. The Concrete Moisture Encounter determines the strength of the current and converts this to a moisture content value or CM Equivalent value for concrete slabs and other cementitious floor screeds, displayed on a large clear analogue dial.



OPERATING PROCEDURE

To carry out tests simply brush any dust from a smooth area of concrete and also from the electrodes, switch on the Concrete Moisture Encounter and place it firmly onto the surface, fully compressing the spring-loaded, signal-enhancing contacts on the base. Read the moisture content from the clear analogue dial.

The Concrete Moisture Encounter is calibrated to give percentage moisture content readings on clean, bare dust free concrete floor slabs, with a depth of penetration of approx. 20 mm (3/4"). Readings taken on concrete slabs through paint, coatings, adhesives or other materials on the surface should be regarded as qualitative or comparative and not quantitative.



SPECIFICATIONS

Size:	160mm x 85mm x 38mm (6.3" x 3.5" x 1.5")
Weight:	344g (12.1oz)
Construction:	ABS Body
Power:	2 x AALR6 ALKALINE (included)
Display:	Analogue
Depth of penetration:	20 mm approx. (3/4")

MEASURING RANGE

Moisture Content for Concrete:	0 to 6%
Carbide Method moisture content equivalent for Concrete:	0 to 4
Carbide Method moisture content equivalent for Anhydrite:	0 to 1.9

Free App Available for Mobile and Tablet:



TRAMEX Ltd.
 Unit F, Glencormack Business Park, Kilmacanogue, Co.Wicklow, Ireland.
 Tel: +353 1 681 4450 | Fax: +353 1 282 7880
 Email: sales@tramexmeters.com

www.tramexmeters.com